



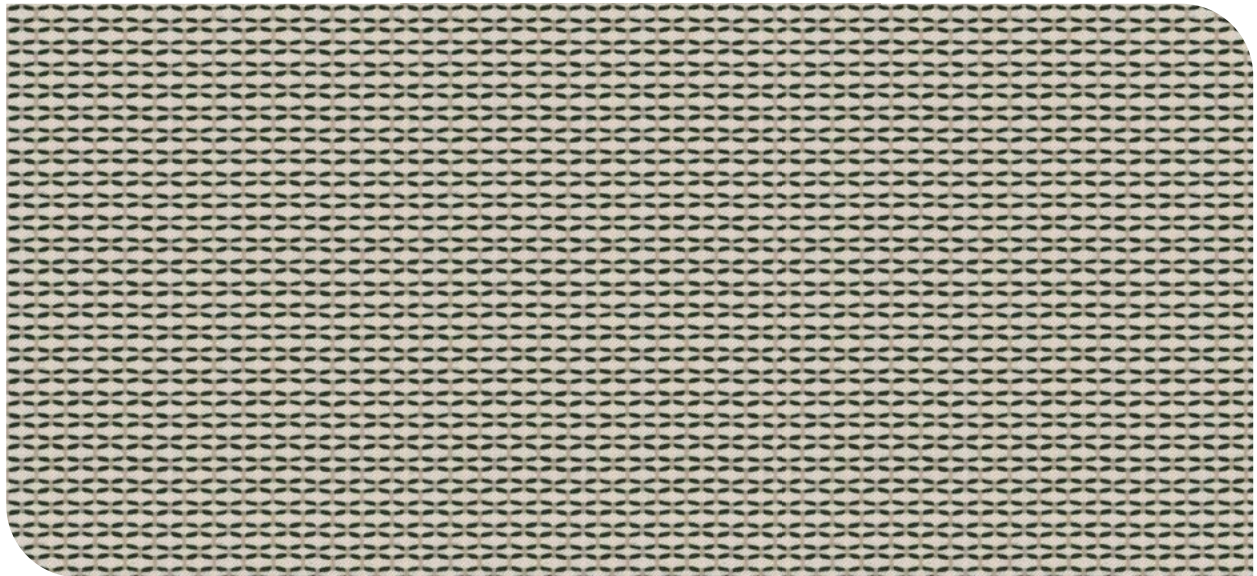
Mayer Fabrics

Fabric
Static

STATIC FABRIC

Fabric Card

While every effort is made to present as accurate reproduction as possible, colors on actual products may vary slightly from digital reproductions.



TL466-026
PIANO



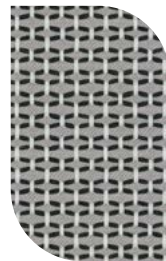
TL466-006
GREIGE



TL466-007
PUMICE



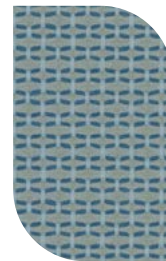
TL466-000
MOCHA



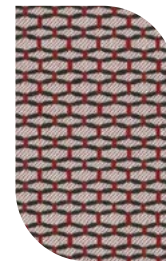
TL466-016
GRANITE



TL466-003
MEADOW



TL466-004
BLUESTONE



TL466-001
SCARLET

NOTE: We do not guarantee matches and recommend you examine a sample prior to accepting a color match.



ISO 9001
certified

ISO 14001
certified



Borgo Contract Seating
324 Carlingview Drive Toronto, Ontario M9W 5G5
www.borgo.com | sales@borgo.com | T. 416 679.8133 | Toll Free. 1 888 312.6746

© Borgo Contract Seating - December 10, 2020 2:25 PM

STATIC FABRIC

Fabric Card

TECHNICAL INFORMATION

Content: 88% Polyester, 12% Graffiti-Free Tekloom TPE	Backing: Polyester	Visual Repeat: 0.5, 0.5
Width: 54"	Finish: WRITE AWAY® - Soil and Stain Resistant Top Coat with Ink Resistant Technology	Directionality: True
Weight: 17 oz./linear yard	Cleaning Code: WS, CFC, BC	Shown RR: N/A

PERFORMANCE

Surface Abrasion: Heavy Duty	Exceeds 1,000,000 Double Rubs (Wyzenbeek)
Breaking Strength:	Warp: 321.0 lbs. / Fill: 270.1 lbs.
Seam Slippage:	Warp: 74.5 lbs. / Fill: 60.5 lbs.
Colorfastness to Crocking:	Dry: Class 4 min / Wet: Class 4 min
Colourfastness to Light:	40 hours

FLAMMABILITY

Passes Cal 117-2013; NFPA 260/UFAC Class 1; IMO A.652(16) 8.2

CLEANING

WS: Water/Solvent Cleaner - Spot clean with a mild solvent, an upholstery shampoo, or the foam from a mild detergent. When using a solvent or dry cleaning product, follow instructions carefully and clean only in a well-ventilated room. Avoid any product that contains carbon tetrachloride or other toxic materials. With either method, pretest a small area before proceeding. Always rinse promptly with clean water.

CFC: Coated Fabrics Cleaning - Please refer to cleaning information section on Mayer website for complete cleaning info.

BC: Bleach Cleanable - 1 parts bleach, 9 parts water = 10% bleach, 90% water solution. Do not clean / disinfect fabric for longer than 10 minutes using the 10% bleach solution. Always rinse promptly with clean water after applying the bleach solution. Failure to do so will void any and all warranties.

Write-Away products from Mayer Fabrics defies unsightly ink spots and paint stains. Take action 'right away' on Write-Away products by following the cleaning instructions for Ink Stains. Always rinse thoroughly with clean water.



ISO 9001
certified

ISO 14001
certified



Borgo Contract Seating

324 Carlingview Drive Toronto, Ontario M9W 5G5
www.borgo.com | sales@borgo.com | T. 416 679.8133 | Toll Free. 1 888 312.6746

© Borgo Contract Seating - December 10, 2020 2:25 PM