



borgo®

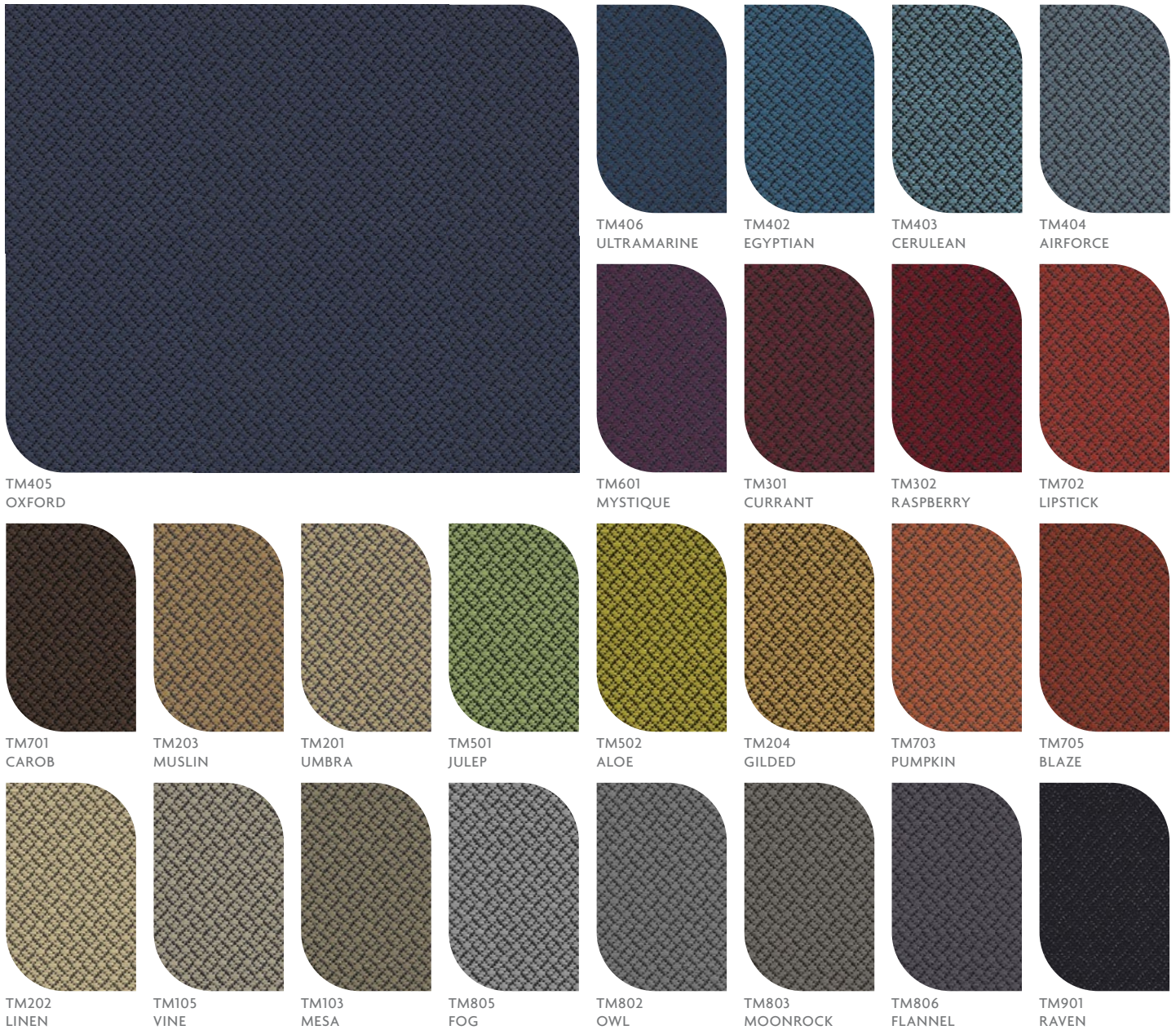
Geo. Sheard Fabrics

Fabric
Titanium

TITANIUM FABRIC

Fabric Card

While every effort is made to present as accurate reproduction as possible, colors on actual products may vary slightly from digital reproductions.



NOTE: We do not guarantee matches and recommend you examine a sample prior to expecting a color match.



ISO 9001
certified

ISO 14001
certified



Borgo Contract Seating
324 Carlingview Drive Toronto, Ontario M9W 5G5
www.borgo.com | sales@borgo.com | T. 416 679.8133 | Toll Free. 1 888 312.6746

© Borgo Contract Seating - December 16, 2020 8:06 AM

TITANIUM FABRIC

Fabric Card

SPECIFICATIONS

Style:	60420
Contents:	65% Post Consumer Recycled Polyester, 35% Polyester
Weight:	10 oz./linear yd.
Width:	54"
Backing:	Acrylic
Finish:	Greenshield Stain Repellent
Cleaning Code:	WS

PERFORMANCE

Abraison Resistance* ASTM D-4157	120 000+ Double Rubs
Pilling Resistance ASTM D-3511	Class 5
Colourfastness to Light AATCC 16-A	L5 min 40 hrs
Colorfastness to Crocking AATCC 8	Class 5-dry Class 5-wet

FLAMMABILITY

State of Calif. Tech Bulletin 117:2013	Passes
---	--------

*Multiple factors affect fabric durability and appearance retention, including end-user application and proper maintenance. Wyzenbeek results about 100,000 double rubs have not been shown to be an indicator of increased lifespan.

The Greenleaf logo is a trademark of Geo. Sheard Fabrics and designates fabrics containing post-consumer recycled polyester made from recycled plastic bottles which are diverted from landfills. The recycling of polyester reduces the environmental footprint left from processing petroleum products into virgin polyester. The ensuing reduction in the energy required for the manufacturing process results in lower emissions levels and less waste.

Dyelots may vary slightly from samples shown.



ISO 9001
certified

ISO 14001
certified



Borgo Contract Seating

324 Carlingview Drive Toronto, Ontario M9W 5G5
www.borgo.com | sales@borgo.com | T. 416 679.8133 | Toll Free. 1 888 312.6746

© Borgo Contract Seating - December 16, 2020 8:06 AM